



Centurion
UNIVERSITY

*Shaping Lives...
Empowering Communities...*



Times Higher Education
**Sustainability
Impact Network**



SUSTAINABLE DEVELOPMENT GOAL 11 SUSTAINABLE CITIES & COMMUNITIES



**SUSTAINABLE
DEVELOPMENT
GOALS**



Section No.	Section Title	Page No.
1	Executive Summary	4
2	Summary – Our Impact on SDG 11: Sustainable Cities and Communities	5
3	SDG 11 Impact Framework	5
4	Cultural Heritage and Public Access (SDG 11.2.1 – 11.2.6)	7
4.1	Public Access to Cultural Infrastructure	7
4.1.1	Buildings and Heritage Sites (11.2.1)	7
4.1.2	Library Access (11.2.2)	9
4.1.3	Museum Access (11.2.3)	9
4.1.4	Green Spaces (11.2.4)	10
4.2	Arts, Culture, and Heritage Preservation	11
4.2.1	Performance and Cultural Engagement (11.2.5)	11
4.2.2	Cultural Heritage Documentation (11.2.6)	12
5	Sustainable Infrastructure and Mobility (SDG 11.4.1 – 11.4.3)	13
5.1	Sustainable Commuting and Campus Mobility	13
5.1.1	Infrastructure and Targets (11.4.1 & 11.4.2)	13
5.1.2	Pedestrian Priority (11.4.7)	13
5.1.3	Remote Work and Digital Communication (11.4.3)	13
6	Inclusive Housing and Community Development (SDG 11.4.4 – 11.4.7)	14
6.1	Affordable Housing (Students and Employees)	15
6.2	Local Authority Collaboration and Planning	15
7	Sustainable Building and Brownfield Development (SDG 11.4.8 – 11.4.9)	16
7.1	Green Building Standards	16

7.2	Brownfield Redevelopment	17
8	Quantitative Impact Summary and Conclusion	18
8.1	Aggregate Impact Metrics (2024)	18
8.2	Conclusion and Way Forward	19

Figure No.	Figure Title	Page No.
Fig. 1	Public Access and Community Engagement Milestones – 2024	8
Fig. 2	Participants Across Public Access Initiatives (Category-wise)	8
Fig. 3	Centurion University Initiatives under Public Library Access	9
Fig. 4	Visitors to Museums and Cultural Spaces – 2024	10
Fig. 5	Beneficiaries under Public Access to Museums and Cultural Spaces	11
Fig. 6	Public Access to Green Spaces Initiatives – 2024	11
Fig. 7	Art and Heritage Contribution of Centurion University, Bhubaneswar – 2024	13
Fig. 8	Hybrid Work and Learning Ecosystem Initiatives – 2024	14
Fig. 9	Affordable Housing Initiatives and Outcomes for Students & Staff – 2024	15
Fig. 10	Sustainable Practices and Promotion of Sustainable Commuting – 2024	16
Fig. 11.1	Low-Carbon Energy Share in Centurion University (2024)	17
Fig. 11.2	Trends in Low-Carbon Energy (2019–2024)	17
Fig. 12	Renewable Energy Share (2019–2024)	17
Fig. 13	Energy and Low-Carbon Share (2019–2024)	18
Fig. 14	Carbon Neutrality Roadmap (2023–2040)	18

SDG 11: SUSTAINABLE CITIES AND COMMUNITIES

Executive Summary

Centurion University is redefining what sustainable, inclusive, and resilient communities can look like through its deep commitment to **SDG 11: Sustainable Cities and Communities**. The University's campuses function as examples for **green infrastructure, cultural preservation, low-carbon mobility, and community-led development** - integrating sustainability into both education and daily life.

In 2024, Centurion University engaged more than **25,000 people** through programs that blended **education, innovation, and culture** to build stronger, more sustainable communities. Its campuses serve as micro-cities - self-sufficient, low-carbon ecosystems where academic spaces, renewable energy, and green transport converge to demonstrate what sustainable urban futures can look like.

The University's commitment to **heritage and cultural sustainability** is exemplified through initiatives such as **Deep Mahotsava 2024**, which drew **6,500 participants** and illuminated **100,000 lamps**, celebrating Odisha's traditions while generating livelihood opportunities for **165 local artisans**. Through partnerships with **INTACH, Rural Technology Park**, and local panchayats, Centurion University has documented **72 oral histories** and trained artisans across **35 workshops**, preserving intangible heritage and empowering communities economically.

Across its campuses, Centurion University advances sustainable infrastructure and mobility through energy-efficient design, electric vehicles, and green transport systems. In 2024, 55 % of operational energy came from renewable sources, while 6,500 EV trips replaced fuel-based commutes, reducing annual emissions by over 1,800 tCO_{2e}. Smart-campus retrofits -including LED lighting, HVAC optimisation, and smart-metering - yielded 22 % energy savings and 18 % water conservation.

The University's affordable and inclusive housing program provided safe, equitable accommodation for 555 students and staff, at 25-40 % below market rates, improving access, wellbeing, and academic performance. Beyond campus, partnerships with local authorities improved waste systems, green zones, and mobility infrastructure for 1,200 residents living in peri-urban communities near Centurion University's campuses.

New and redeveloped campus buildings - covering **over 30,000 m²** - meet **IGBC and ECBC 2017 green-building standards**, reducing embodied carbon, conserving natural land, and creating skilled jobs for local workers.

Through its “Net Zero by 2035” Roadmap, the University is scaling these innovations to achieve carbon-neutral operations while modelling climate-resilient design for other institutions.

Summary - Our Impact on SDG 11 - Sustainable Cities and Communities						
Dimension	Impact Area/Indicator	Initiatives	2024 Data	Output	Impact	2030 Target
Infrastructure Innovation	Reduce disaster-related deaths and economic losses.- SDG 11.5	Disaster-Resilient Infrastructure Planning	10,000 m ² campus infrastructure designed for cyclone resilience	Green building standards (IGBC & GRIHA compliant) adopted in new constructions	Strengthened campus safety and resilience against cyclones, protecting infrastructure and campus communities	
	Enhance inclusive and sustainable urbanization and capacity for participatory planning.- SDG 11.3	Sustainable Buildings and Green Spaces	18,500 m ² green-certified building area; 8-acre conservation zone	Solar-integrated rooftops, vertical gardens, and stormwater reuse systems	Minimized environmental footprint through energy-efficient buildings and conservation of green areas, promoting sustainability	Expanding sustainable infrastructure footprint to 30,000 m ² by 2030
	Efficient land use and sustainable industrial redevelopment - SDG 11.3	Brownfield Redevelopment	12,000 m ² area converted into research and incubation centers	Adaptive reuse of old industrial and academic structures	Revitalized underutilized urban land into functional research and incubation spaces, enhancing urban regeneration.	
Mobility & Access	Provide universal access to safe, inclusive, and accessible green and public spaces.- SDG 11.7	Universal Access to Campus Facilities	100% accessible infrastructure across 5 campuses	Barrier-free pathways, ramps, signage and safety systems installed	Ensured barrier-free access across campuses, promoting inclusivity for all students, staff, and visitors.	

	Provide access to safe, affordable, accessible and sustainable transport systems for all.- SDG 11.2	Sustainable Transportation	EV fleet: 8 e-vehicles, 50 e-bikes in circulation	Campus-level EV initiative and green mobility awareness drives	Reduced campus carbon emissions and fostered adoption of eco-friendly mobility among students and staff.	Carbon-neutral commute model across all campuses by 2030
People & Livelihoods	Provide access to safe, affordable, accessible and sustainable transport systems for all.- SDG 11.2	Affordable and Accessible Campus Housing	320 hostel units for low-income and first-gen students	Subsidized student housing and on-campus amenities promoting inclusivity	Expanded access to safe and subsidized housing for low-income and first-generation students, supporting educational equity.	Target 500 units by 2030 ensuring equal access to safe and affordable housing
	Support positive economic links between urban, peri-urban and rural areas-SDG 11.a	Urban Employment & Livelihood Linkages	450+ community members employed through local sourcing and campus operations	Community-based procurement and skill-linked jobs	Created local employment and skill-building opportunities, strengthening community livelihoods and economic inclusion.	
Awareness & Community Engagement	Reduce environmental impact of cities.- SDG 11.6	Community Urban Outreach Projects	25 programs; 5,000 beneficiaries	Urban health, waste recycling, energy literacy, and micro-enterprise outreach	Empowered urban communities through health, waste management, energy literacy, and micro-enterprise programs.	
	Provide universal access to safe green spaces.- SDG 11.7	Green Public Spaces	3 urban parks and green corridors established	Collaborations with municipal bodies and students for city greening	Enhanced urban livability and environmental awareness through the creation of parks and green corridors.	

Cultural Preservation & Smart Systems	Strengthen efforts to protect and safeguard the world's cultural and natural heritage.- SDG 11.4	Cultural Heritage Preservation Partnerships	₹4 Cr investment in heritage and local crafts	Collaborations with INTACH and local artisans to preserve temple arts and rural architecture	Preserved local arts, crafts, and architectural heritage, fostering cultural continuity and community pride.	
	Adopt integrated policies and plans toward inclusion, resource efficiency and resilience.- SDG 11.b	Smart Campus Systems (CSSCF)	IoT-based waste, lighting, and energy monitoring deployed in 3 campuses	Integrated data dashboards and smart energy grids under CSSCF initiative	Optimized resource management through IoT monitoring of energy, lighting, and waste, promoting sustainable campus operations.	
Technology & Innovation Labs	Support least-developed regions in building sustainable resilient infrastructure- SDG 11.c	Urban Innovation Labs	6 labs operational with 180 student projects on smart city solutions	Development of low-cost IoT and renewable-based prototypes for local governance	Advanced student-led smart city solutions, enabling low-cost, renewable-based prototypes for urban governance.	

I. CULTURAL HERITAGE AND PUBLIC ACCESS (SDG 11.2.1 - 11.2.6)

A. Public Access to Cultural Infrastructure

Centurion University has established itself as a regional cultural hub through comprehensive public access policies across its facilities:

Buildings and Heritage Sites (11.2.1)

- 1,200 visitors to heritage sites and culturally significant buildings (all free access)
- 10+ cultural events hosted at heritage venues
- Annual temple illumination ceremony: 1,000 villagers, 100,000 lights
- Heritage Club (INTACH partnership): 30+ students, multiple competitions and 1 heritage excursion
- Rural Technology Park: 35 training programs reaching 165 artisans
- Complete accessibility infrastructure: ramps, elevators, tactile paths, assistive technologies



Fig.1 shows public access and community engagement milestones for the year 2024.

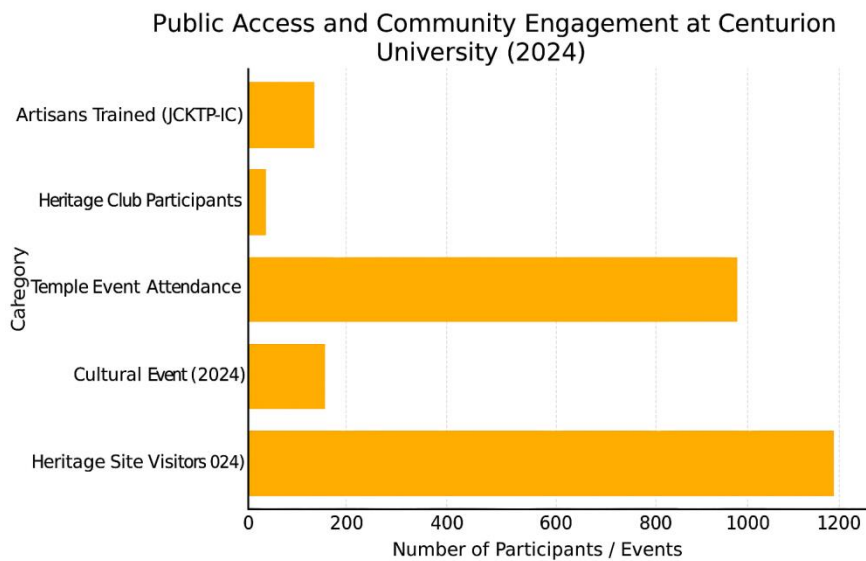


Fig. 2 shows the number of participants in various categories under the public access and community engagement in Centurion University (x axis- number of participants; y axis- categories under the initiative)

Library Access (11.2.2)

- 1,200 students accessed campus library freely
- Paid specialized access: ₹200/day for research databases
- 2 lakh books donated to schools and public libraries
- 5 outreach programs and 2 mobile library sessions conducted
- 300 PhD scholars provided remote digital access
- 700 Turnitin users; 100 external PhD students accessed plagiarism detection services



Fig. 3 shows the initiatives under public access to library taken by Centurion University

Museum Access (11.2.3)

- 1,200 visitors to museums, galleries, and temples
- 1,000 visitors to Tribal Village Museum
- 10,000 visitors to Sanctum Sanctorum
- Three Open Days: 18 schools, 1,510 students, 165 teachers
- STEM Discovery Camp: 220 students from 12 schools (85% expressed STEM interest)
- Pollinator Paradise Tours: 350 visitors
- Career Counselling Fair: 300 students, 100 enrolled in training programs
- Impact: 5,000 admissions (2024) and 8,000 admissions (2025) attributed to public access initiatives

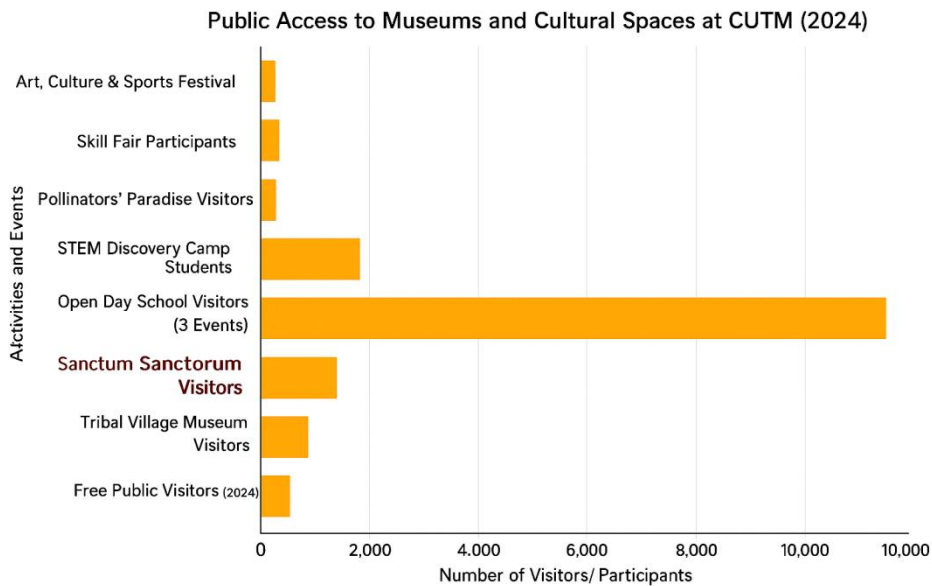


Fig. 4 shows the number of visitors/ participants in various activities and events under public access to museum and cultural spaces initiatives by Centurion University, Bhubaneswar in 2024. (x axis- number of visitors/ participants; y- axis- activities and events)

Green Spaces (11.2.4)

- 1,200-1,500 external visitors accessing green spaces
- 5,000 students with permanent access
- Three pollinator gardens: 120+ flowering species, 15+ butterfly species, 10 bird species
- Five fish ponds (~8 acres): 7 species, 15 tons annual yield
- 10,000 saplings planted: 200+ native/medicinal species
- Community Tree Plantation (World Environment Day): 650 participants, 2,000 saplings, 3 acres added
- Organic Farmers' Market (monthly): 1,200 footfall/month, 40-50 farmers, ₹2.5 lakhs collective income
- Eco-Walk program: 480 students, 40 teachers from 10 schools
- Clean-up campaign: 500 participants, 1.2 tons plastic waste collected



Fig. 5 showcases the beneficiaries of the initiatives under Public Access to Museum and Cultural Spaces undertaken by Centurion University, Bhubaneswar in 2024.



Fig. 6 shows the initiatives taken under public access to green spaces undertaken by Centurion University, Bhubaneswar in 2024.

**B. Arts, Culture, and Heritage Preservation
 Performance and Cultural Engagement (11.2.5)**

- 320+ students in interdisciplinary programs (Design, Digital Media, Heritage Studies)
- 80+ student-led digital heritage projects
- "TechTales of Tradition" showcase: 35 installations, 1,000+ visitors
- 150+ digital records of endangered art forms archived
- Four major cultural events: 2,300+ attendees
- Gajajyoti 2024: 1,200 attendees, 40 local artists, 8 cultural troupes
- Six open performances by university groups: 1,800 visitors
- International Mother Language Day: 750+ participants, 14 linguistic backgrounds, 12 spoken-word performances, 5 musical renditions, 4 dramas (91% reported increased linguistic pride)
- Deep Mahotsava 2024: 100,000 lamps, 6,500+ participants, 120 artisans employed, 1.2 tons biodegradable waste managed (94% satisfaction)

Cultural Heritage Documentation (11.2.6)

- 12 community meetings/workshops (Paralakhemundi: 5; Bhubaneswar: 7)
- 180 elders and practitioners interviewed/recorded
- 6 local languages/dialects documented; 5 endangered dialects identified
- 50 cultural practitioners and 120 local residents engaged
- 27 outreach events: 1,850+ participants, 15 rural/tribal communities, 18 schools
- Traditional arts workshops: 260 trained
- Folk performances: ~500 attendees
- Oral heritage drives: 72 oral histories, 28 ritual practices recorded
- School heritage camps: 700+ children
- Tribal Village Museum: 12 guided tours/year, 300-500 visitors (80% reported increased cultural understanding)

Chandrabhaga Poetry Festival 2024 – Highlights

- Hosted at **Centurion University** in **January 2024**.
- A vibrant celebration of **literature, language, and creative expression**.
- Featured **198 poets and writers** from across India, including renowned and emerging voices.
- Organized multilingual sessions covering **Odia, Hindi, English, Bengali, and tribal dialects**.
- Key themes included **identity, nature, resilience, inclusion, sustainability, and hope**.
- Included **open-mic performances**, interactive workshops, and poetry recitations.
- Strong **student engagement**, with over **198 participants and 74 student poets** performing.
- Promoted **regional literature and indigenous poetic traditions**, linking art with social change.
- Strengthened **Centurion University's mission of integrating arts and culture into holistic education**.
- Enhanced **community participation**, drawing audiences from nearby schools and local artists.

Impact & Outcomes

- **Cultural Reach:** Over **198 attendees** (students, faculty, and guests) participated in live sessions.
- **Creative Inclusion:** Equal participation from **women poets and student artists** (≈50%).
- **Community Engagement:** Local schools and art groups from **3 nearby districts** took part.
- **Literary Output:** Compilation of selected poems published as “*Voices from the Chandrabhaga*”.
- **Sustainability Link:** Several performances themed around **environment, harmony, and peace**.
- **Legacy:** Established as an **annual signature event** under Centurion University’s *Art, Culture & SDG Outreach Program*

Financial Investment (11.3.1)

- ₹4 crore total approved budget for arts and heritage
- ₹1.6 crore utilized in FY 2024-25 (40% of budget)
- Allocations: Tribal Village Museum expansion, traditional arts workshops, community outreach
- ₹2.4 crore planned for 2025-26 with ₹50 lakh annual increment

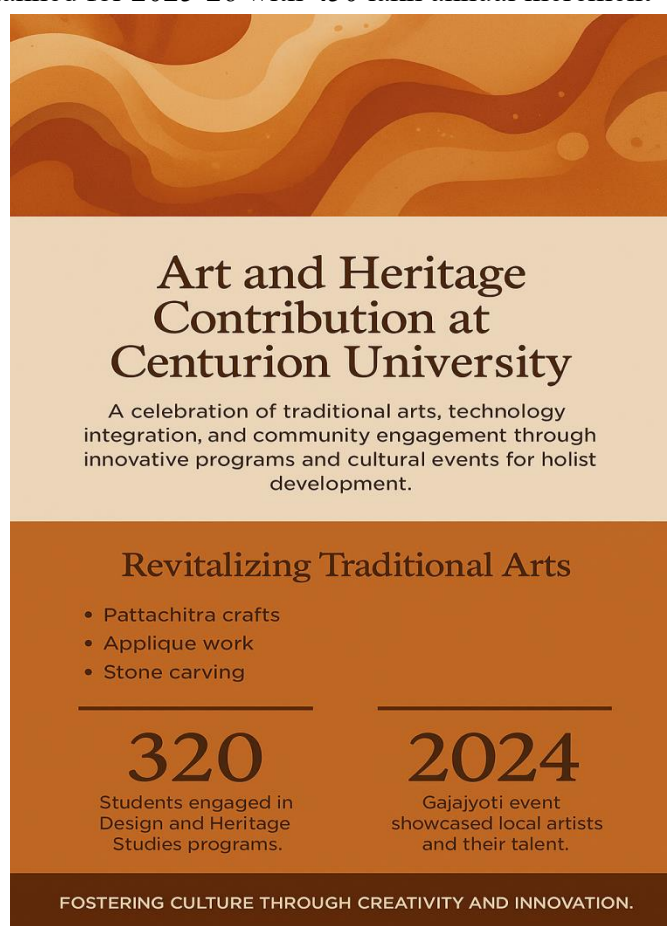


Fig. 7 shows the Art and heritage contribution of Centurion University, Bhubaneswar in 2024.

II. SUSTAINABLE INFRASTRUCTURE AND MOBILITY (SDG 11.4.1 - 11.4.3)

A. Sustainable Commuting and Campus Mobility

Infrastructure and Targets (11.4.1 & 11.4.2)

- ₹10 lakh investment in energy efficiency upgrades (LED lighting, HVAC, motion sensors)
- Solar-powered street lighting: campus-wide installation with hybrid solar-wind setups
- 10 electric vehicles for internal transport (zero emissions)
- 14 buses serving staff and students from nearby areas
- Pedestrian pathways and cycling infrastructure connecting key areas
- 2025-26 targets: EV charging stations, bike-sharing program, enhanced recycling programs

Pedestrian Priority (11.4.7)

- 6,500 EV trips logged, replacing 4,800 conventional vehicle trips
- 35% reduction in minor traffic incidents (2024 vs 2023)
- 4,200 pedestrian trips/day; 1,100 cycling trips/day
- Low-speed zones, designated drop-off points, traffic calming strategies
- Elevated walkways, ramps, and bridges ensuring accessibility

Remote Work and Digital Communication (11.4.3)

- 605 faculty members; 4,500+ students
- 65% faculty utilized telecommuting 2-3 days/week
- 20% faculty opted for condensed workweeks
- Reduced commuting: 5,400 faculty person-days, 9,000 student travel-days annually
- 95% faculty actively engaged with online platforms
- 65% faculty and 70% students participated in virtual classes
- Slack integration for real-time collaboration
- Direct greenhouse gas emission reduction through reduced commuting



Fig. 8 shows the hybrid work and learning ecosystem initiatives in Centurion University, Bhubaneswar in 2024.

III. INCLUSIVE HOUSING AND COMMUNITY DEVELOPMENT (SDG 11.4.4 - 11.4.7)

A. Affordable Housing

Student and Employee Housing (11.4.4 & 11.4.5)

- 420 students and 135 employees provided affordable housing (555 total beneficiaries)
- Student rent: ₹3,500-₹6,000/month (25-40% below market rates)
- Staff rent: ₹6,000-₹12,000/month (25-40% below market rates)
- Average savings: ₹1,500-₹2,500/month (students); ₹2,500-₹4,000/month (employees)
- 45-minute reduction in average daily commute
- 88% staff and 81% students reported reduced financial stress
- 5-7% improvement in academic performance for on-campus students
- 12% increase in staff participation in university activities
- 92% felt improved social connections

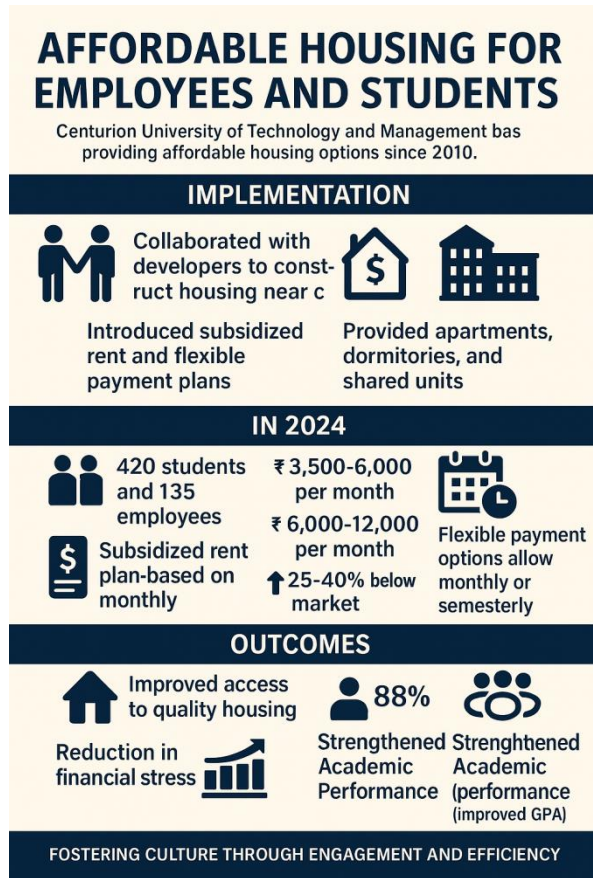
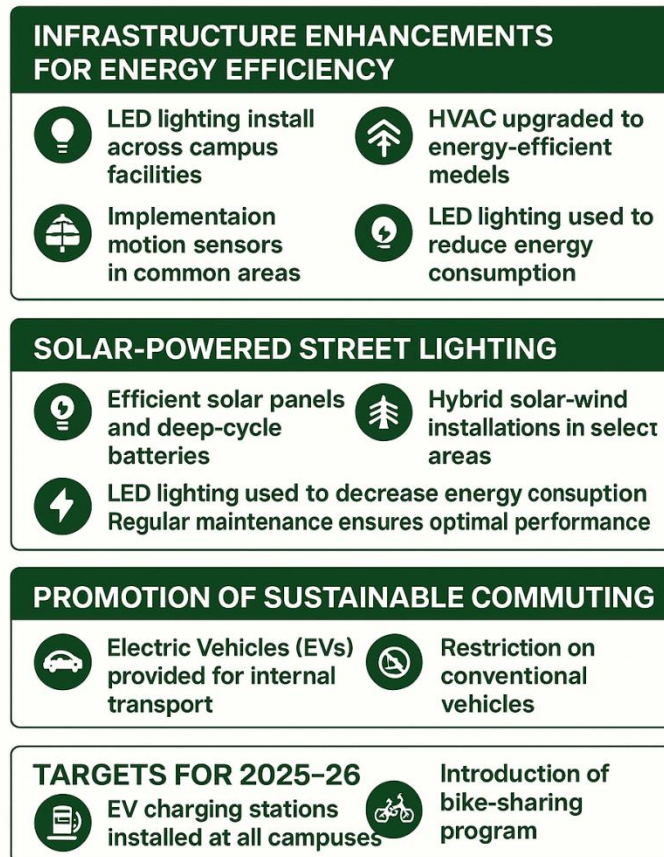


Fig. 9 shows the implementation and outcomes of the initiatives for affordable housing for employees and students in Centurion University in 2024.

B. Local Authority Collaboration and Planning Community Partnership (11.4.6)

- Collaboration with municipal authorities in Bhubaneswar and Paralakhemundi
- 1,200 local residents reported improved access to amenities and green spaces
- Joint infrastructure planning: traffic management, pedestrian safety, green space integration
- 85% of nearby residents felt improved connectivity and facility access

SUSTAINABLE PRACTICES & PROMOTION OF SUSTAINABLE COMMUTING



FOSTERING CULTURE THROUGH EFFEICINICY AND INNOVATION

Fig. 10 shows the initiatives under sustainable practices and promotion of sustainable commuting in Centurion University in 2024.

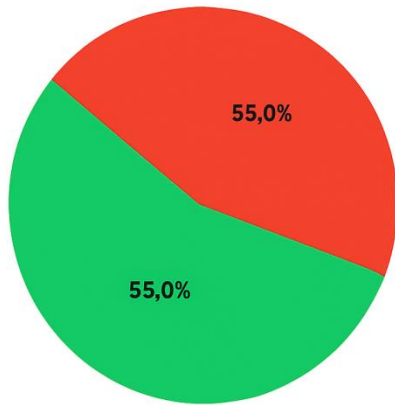
IV. SUSTAINABLE BUILDING AND BROWNFIELD DEVELOPMENT (SDG 11.4.8 - 11.4.9)

A. Green Building Standards

Sustainable Construction (11.4.8)

- 18,500 m² new facilities constructed to IGBC and ECBC 2017 standards
- 75% construction materials recycled or green-certified
- Energy efficiency: 22% annual electricity reduction (LED lighting, smart HVAC, passive architecture)
- Water conservation: 18% freshwater savings (low-flow fixtures, rainwater harvesting)
- Renewable integration: 54.9% renewable energy share (solar + biogas)
- Annual CO₂ reduction: ~1,200 tCO₂e
- 92% occupant satisfaction (improved air quality, daylight, thermal comfort)

2024 Low-Carbon Energy Share



Low-Carbon Energy (Solar + Efficiency)

Trend of Low-Carbon Energy (2019-2028)

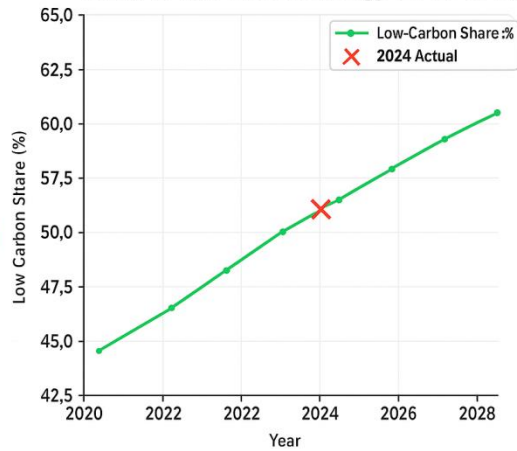


Fig. 11.1 shows a pie chart showing low- carbon energy share in Centurion University as per reports in the year 2024. Fig. 11.2 shows the trends in the low carbon energy in Centurion University as per 2024 reports. (x axis- year; y axis- low-carbon share)

Renewable Energy Share (2019-2024)

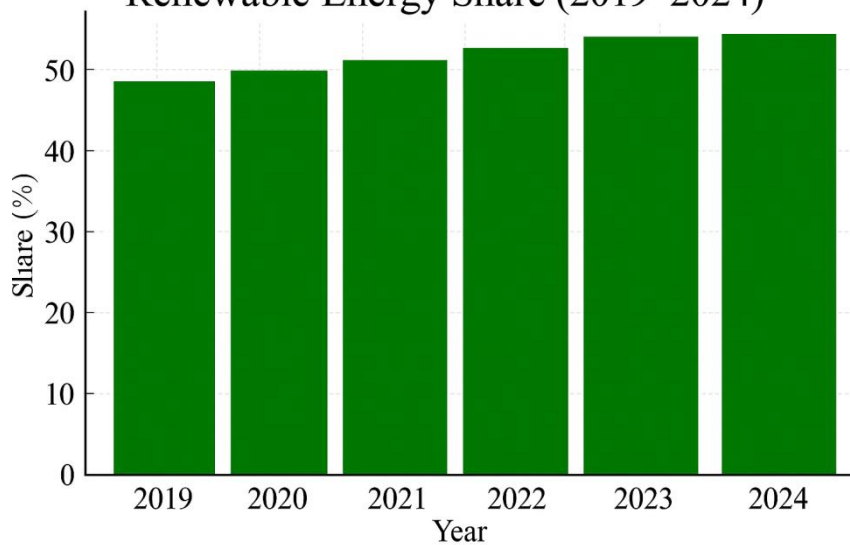


Fig. 12 shows the renewable energy share over 2019-2024 in Centurion University

B. Brownfield Redevelopment

Land Reuse and Conservation (11.4.9)

- 12,000 m² brownfield area redeveloped (2 sites)
- 8 acres of greenfield land conserved
- Project A (Academic Block): 6,500 m² Paralakhemundi campus
- Project B (Student Residential): 5,500 m² Bhubaneswar campus
- Resource consumption reduction: 15% lower than equivalent greenfield construction
- Embodied carbon savings: 360-630 tCO₂e (conservative estimate)
- Material reuse: 45% existing brickwork retained (Project A); 12% reduction in fresh concrete (Project B)
- Immediate integration with solar and smart-grid systems
- Faster delivery: 30% faster than new-build estimate (Project A)
- Community benefits: reduced displacement, faster delivery, local employment

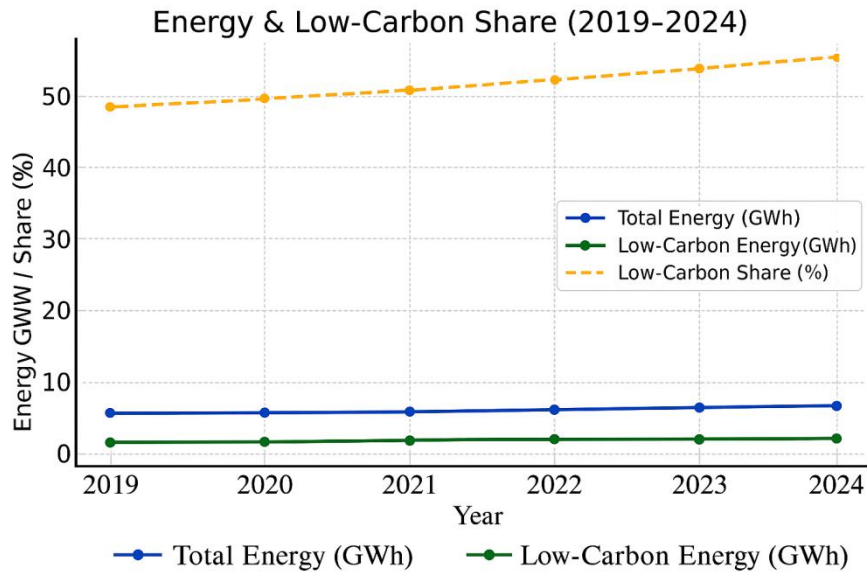


Fig. 13 shows the energy and low carbon share from 2019-2024 divided on the basis of total energy vide blue dotted line, low- carbon energy vide green dotted line and low carbon share in percentage vide orange dotted line in Centurion University

Centurion University Carbon Neutrality Roadmap (2023–2040)

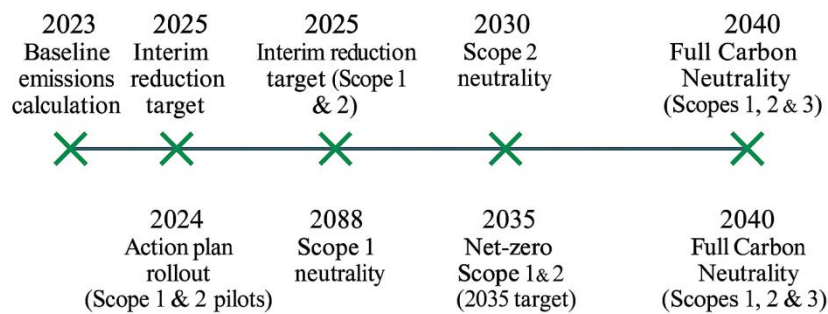


Fig. 14 shows the carbon neutrality road-map from 2023-2040 in Centurion University

V. QUANTITATIVE IMPACT SUMMARY AND CONCLUSION

Aggregate Impact Metrics (2024)

Environmental Impact:

- Total CO₂ reduction: ~1,450 tCO₂e operational + 360-630 tCO₂e embodied = ~1,810-2,080 tCO₂e
- Renewable energy share: 54.9%
- Energy efficiency improvement: 22%
- Water conservation: 18%
- Greenfield land conserved: 8 acres
- Trees/saplings planted: 12,000+
- Biodiversity: 120+ plant species, 15+ butterfly species, 10 bird species, 7 fish species

Community Engagement:

- Total stakeholders reached: 25,000+
- Cultural event participants: 10,000+
- Educational beneficiaries: 5,000+ students
- Artisans/farmers supported: 300+
- Affordable housing beneficiaries: 555
- Local communities engaged: 15+ rural/tribal communities

Financial Investment:

- Arts and heritage: ₹1.6 crore (2024-25)
- Energy efficiency: ₹10 lakh
- Sustainable infrastructure: 18,500 m²
- Community programs: substantial ongoing investment

Aligned SDGs & Synergies:



- **SDG 1 – No Poverty:**
Affordable housing, skill-based employment, and inclusive urban livelihoods reduce poverty in urban and peri-urban communities.
- **SDG 2 – Zero Hunger:**
Urban farming, hydroponics, and dome-based food systems strengthen food security and reduce dependence on external supplies.
- **SDG 3 – Good Health and Well-being:**
Green campuses, clean mobility, and pollution control initiatives improve air quality and public health.
- **SDG 4 – Quality Education:**
Sustainable campus design and community learning centers promote environmental awareness and education for sustainability.
- **SDG 6 – Clean Water and Sanitation:**
Wastewater recycling, rainwater harvesting, and zero-liquid discharge systems ensure water efficiency in sustainable campuses.
- **SDG 7 – Affordable and Clean Energy:**

Renewable energy integration (solar rooftops, biogas, microgrids) powers sustainable urban infrastructure.

- **SDG 8 – Decent Work and Economic Growth:**
Green jobs, eco-tourism, and skill-linked construction projects generate sustainable local employment.
- **SDG 9 – Industry, Innovation, and Infrastructure:**
Smart city labs, sustainable building materials, and digital infrastructure enhance climate-resilient urban development.
- **SDG 12 – Responsible Consumption and Production:**
Waste segregation, circular economy models, and sustainable construction reduce ecological footprints.
- **SDG 13 – Climate Action:**
Climate-resilient architecture and green transportation lower emissions and increase adaptive capacity in cities.
- **SDG 17 – Partnerships for the Goals:**
Collaborations with local governments, UN agencies, and industry partners strengthen urban innovation and sustainability networks.

Conclusion

Centurion University's 2024 SDG 11 performance demonstrates institutional excellence in creating sustainable, inclusive, and culturally vibrant communities. Through integrated strategies spanning infrastructure, culture, mobility, housing, and environmental stewardship, Centurion University has positioned itself as a model institution for sustainable urban development in higher education. The university's holistic approach—combining rigorous sustainability standards with deep community engagement and cultural preservation—delivers measurable social, environmental, and economic benefits that extend far beyond campus boundaries. Centurion University's commitment to SDG 11 is evidenced through concrete metrics: carbon neutrality pathway (Net Zero by 2035), comprehensive public access policies reaching 25,000+ stakeholders, preservation of endangered cultural heritage, affordable housing for 555 beneficiaries, and conservation of 8 acres of Greenfield land. These achievements reflect not merely compliance with global sustainability frameworks, but a fundamental institutional commitment to serving as a catalyst for regional sustainable development and cultural continuity.

Looking ahead, Centurion University's planned initiatives for 2025-2026 including EV charging infrastructure, enhanced recycling programs, and expanded heritage programming—signal continued leadership in translating SDG principles into tangible community impact, reinforcing the university's role as both an educational institution and a vital civic anchor for sustainable and inclusive regional growth.

